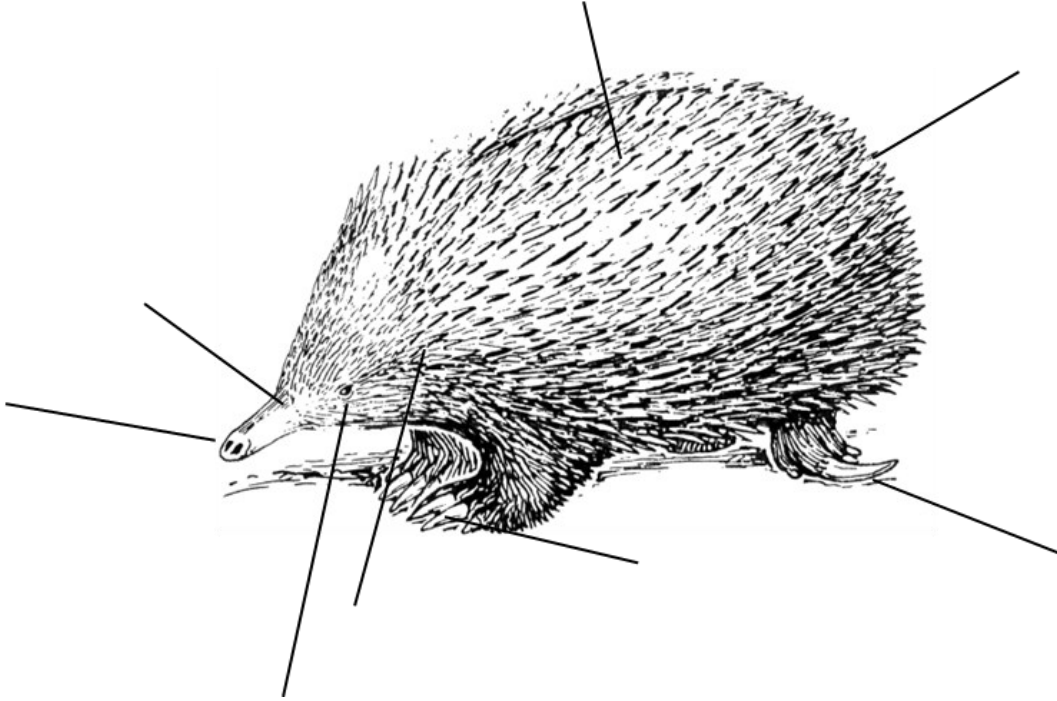


Adaptation Adventures

Label the structural features of an echidna



Beak

Claws

Ear

Eye

Fur

Grooming claw

Nostrils

Spines

Fit the correct word into the sentences below to reveal some amazing facts.

solitary

grooming

endotherms

monotremes

Echidnas are _____ that keep their body temperature low.

Echidnas are _____ animals.

Echidnas have a long _____ claw.

Echidnas are called _____ because they lay eggs.

Scales and Feathers



After meeting a python, write down three adaptations it has.

Structural _____

Behavioural _____

Physiological _____

Widgee and Tawny are both birds, but they have many different features and abilities. Compare them below.

Widgee		Tawny
	Beak shape	
	When they're awake	
	Colour	
	Diet	
	Flight	
	Raising chicks	

Discovery Centre

Watch the bilby video. Why is it filmed at night? How does being nocturnal help bilbies survive in the wild? (*behavioural*)



Find the animal skulls; what are the features of a carnivore?

Draw a carnivore skull here. (*structural*)

Find a stuffed Tawny Frogmouth. Think of three adaptations this bird has.

Structural _____

Behavioural _____

Physiological _____

ADAPTATION DEFINITIONS

Structural (how the body is shaped and features of the body)

Behavioural (how the animal behaves)

Physiological (processes happening inside the body)

Baffling beaks

Find the bird skulls (hint: open the drawers)



Wedge tailed eagle



Sulphur crested
cockatoo



Magpie lark



Pied cormorant

Kind of beak	Diet	Bird with a